

# Million Chair - High Back

Product Code: **MILEX430**

Lead Time Guide: 2 - 6 weeks

## OVERVIEW

A statement of refined luxury, Million Executive Meeting Chair redefines the modern boardroom.

More than just a chair, Million is an opportunity for design expression. This versatile collection can be fully customised with your specified upholstery, and the die-cast aluminium base and arms can be powder coated in any colour, creating a truly bespoke piece that integrates seamlessly into your project's palette.

Million offers both sophistication and resilience – designed to impress clients while standing up to the demands of daily use.

Backed by a 5-year warranty and also available in a low back version, Million combines timeless aesthetics with tailored design flexibility – an investment in executive comfort that elevates every space.



## SPECIFICATIONS

### 140kg Recommended Weight Capacity

### Chair Dimensions (mm)

O/A Height: 1300~  
 O/A Width: 620~  
 O/A Depth: 620~  
 Seat Width: 490~  
 Seat Depth: 460~  
 Seat Height: 460-560~  
 Back Width: 420~  
 Back Height: 735~

**Weight:** 16.5kg

**FABRIC REQUIREMENTS:** 1.50m

## FEATURES

Diecast Aluminium Base & Arms  
 Dynamic Mechanism with 4 Locking Positions  
 Soft Tread Castors  
 BIFMA Certified  
 140kg Recommended Weight Capacity  
 5 Year Warranty

## RELATED PRODUCTS



Million Chair - Low Back



Meta Chair - Polished Frame



Meta Chair - Black Frame



Due to constant innovation, products may be subject to design and specification changes without notice. Copyright ©2022.

**Custom Powder Coat Colour** Click **POWDER COAT** for full range of Advanta Standard Powder Coat Colours. If you require custom powder coat please specify your chosen colour in the notes section on the schedule when placing an order. If this colour is not a standard Dulux colour it may incur additional costs. Please contact Advanta if unsure. **Colour Disclaimer** Colours may vary due to computer screen variations. Please always check actual samples for confirmation to be sure. **Product Disclaimer** Please note our specifications and features are subject to change without notice. For our full T&C's click [HERE](#).

## OPTIONS 1 / ARM AND BASE FINISH



Polished Aluminium Base and Arms



Black Base and Arms

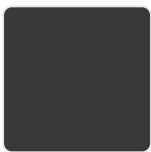


Advanta Standard Powder Coat Colour Base and Arms

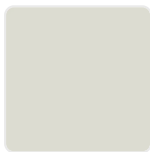


Specified Custom Powder Coat Arms and Base (MOQ 30)

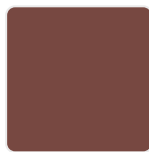
## OPTIONS 2 / POWDERCOAT



Black (Dulux/Interpon)



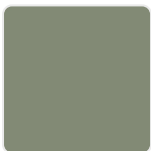
Surf Mist (Dulux/Interpon)



Manor Red (Dulux/Interpon)



Deep Ocean (Dulux/Interpon)



Pale Eucalypt (Dulux/Interpon)



Gully (Dulux/Interpon)



Paper Bark (Dulux/Interpon)

## OPTIONS 3 / SEAT AND BACK FOAM



Standard Foam Seat and Back



Plush Foam Seat and Back (Plush options can't be applied to the Standard Leather Upholstery or the Genuine Leather Special Order Upholstery)

## OPTIONS 4 / UPHOLSTERY

Available in upholstery to selection.



This product can be covered in the fabric, leather or vinyl of your choice.

To make it easy for you, we have several standard ranges of coverings you can select from, but you can also choose from an almost unlimited range of fabric, leather or vinyl available from the leading commercial textile and leather houses in Australia.\*

\*subject to the material being suitable for covering.